

© C. Rosell

Maintenance of signs activated by Animal Detection Systems (ADS)



INSPECTION TASKS To check

- ❑ Signs are clean and well fixed.
- ❑ Signs are installed at hazardous road sections according to information provided in the maintenance plan.
- ❑ Signs are working correctly according to the below periodic tests:
 - Sensors to detect movement are in line with the target animal size.
 - Position and orientation of sensors is correct.
 - Sensors are not blocked by obstacles (e.g. rocks, vegetations or other objects) which impede the detection of the approaching animals.
 - Solar panels, batteries and connections function appropriately.
 - LED lights function appropriately when a detection event occurs.
 - The signs remain activated for the correct period depending on the target species' behaviour and crossing time.

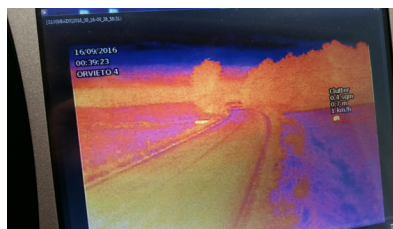


SPECIFIC MAINTENANCE TASKS To do

- Clean the signs. Repair or replace when damage is detected.
- Replace batteries, solar panels or any other elements damaged by vandalism or theft.
- Keep the detection area and zones between the sensors and sign receivers free from branches, bushes or tall grass vegetation. Accumulation of snow during winter requires additional maintenance tasks.
- To save time checking the correct system function, consider ADS systems which allow remote control and testing.
- Add panels to inform drivers how the ADS system functions, warning them when sign is active, indicates the immediate danger of collision with an animal close to or on the road.
- After re-evaluation of AVC hazard risk, signs which no longer indicate the correct location of the hazardous stretch should be removed and/or relocated.



© Minuartia



© Vaneservice



© C. Rosell



Maintenance of signs activated by Animal Detection Systems (ADS)



SCHEDULE

- Check appropriate operation of the ADS system at minimum once a month.
- Corrections to the locations of signs must be planned annually, after a re-evaluation of animal-vehicle collisions hazard risk and identification of any hotspot stretches.
- Temporal signs, when present, must be put into operation just before the critical period according to species involved. Adjust schedule plan in accordance to periodical analyses of AVC risks.