



© A. Giannakopoulos, Callisto

Management of traffic killed animals



INSPECTION TASKS To check

- ❑ A survey for carcass recording and removal procedure is in place, to avoid attraction of scavengers, a risk of carcass-vehicle collision and to facilitate appropriate carcass disposal.
- ❑ Platforms and verges are explored when searching for carcasses, particularly in AVC hotspots.
- ❑ The procedure for data recording includes the identification of the species when possible, particularly for most relevant target species in each site.
- ❑ Periodic additional surveys of small fauna carcasses are planned where required, and undertaken by experts to obtain reliable data of small animals mortality.
- ❑ Coordination is established with traffic police, environmental authorities or any other organisation which record roadkill in the same area to compile all data gathered > See [Sheet 7.4.18](#).



SPECIFIC MAINTENANCE TASKS To do

Apply best practice for collection and disposal

- Provide appropriate clothing and equipment to field crews to ensure hygienic conditions.
- Ensure large carcasses such as deer or wild boar, are more easily collected from platforms and verges by providing cranes, hoists or other special equipment on vehicles.
- Dispose of carcasses according to national regulations. Be aware of particular sanitary requirements, e.g. countries affected by African Swine Fever impose strict biosafety conditions for wild boar collection and disposal.

Register accurate data of all AVC and carcasses

- Record accurate data from carcasses and AVC to allow the identification of hotspots and application of mitigation measures to reduce risk > see [Sheet 7.4.18](#).
- Provide field crews with devices to record data from AVC and carcasses, including accurate geographical position and photographs to allow further identification.

Maintain field crew awareness

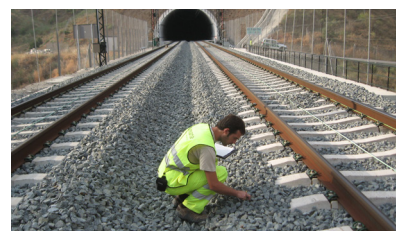
- Keep crew engagement by updating knowledge on wildlife mortality including the provision of user friendly field guides to help with species identification.



© Minuartia



© Catalan Government, DTES



© Minuartia



Management of traffic killed animals



SCHEDULE

- Inspections should be undertaken earlier in the morning as roadkill frequently happens during the night.
- Define appropriate frequency according to target species' behaviour.
- Adapt seasonal and section schedules according to analyses of available data on AVC occurrence.